

Faimport projects, products and services.

Portfolio:

Water treatment.	Page. 2.
Disinfection systems.	Page. 5.
Inputs, sensors and special valves.	Page. 6.
Stability control and clean rooms.	Page. 8.
Pressure control and automation of boilers.	Page. 9.
Flow control.	Page. 10.
Supply control and power generation.	Page. 12.
Process automation control.	Page. 13.
Preventive maintenance control.	Page. 14.
Controls and calibration equipment.	Page. 15.

Water treatment.

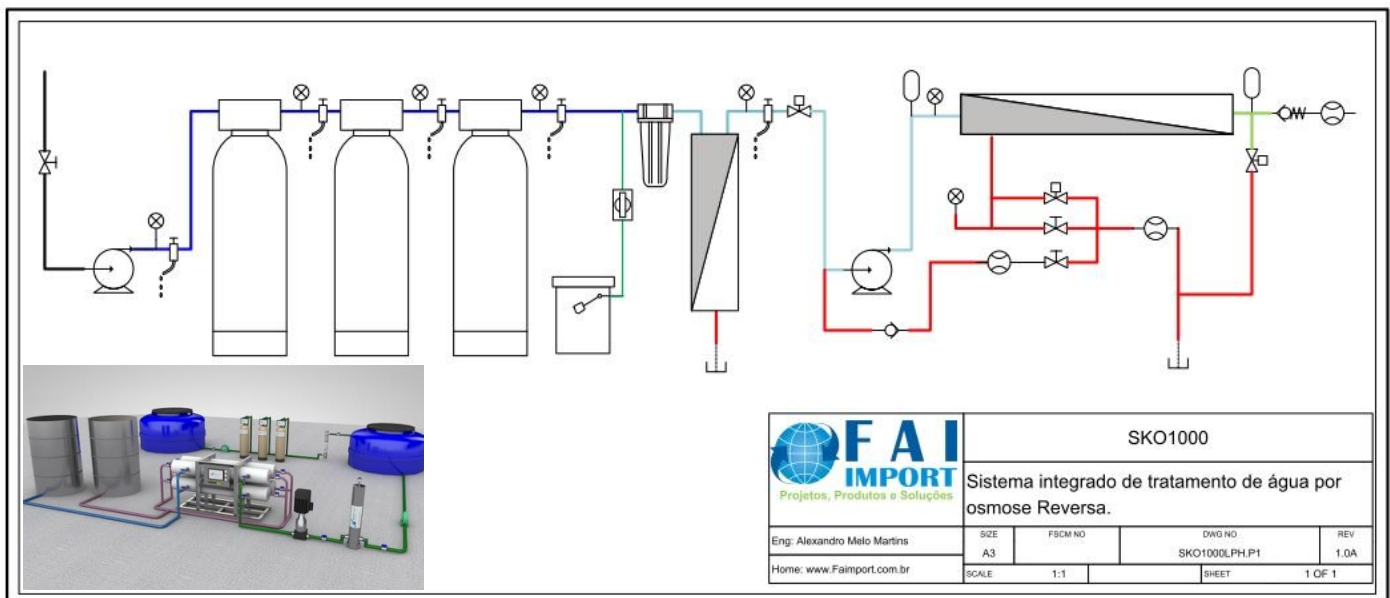
The Faimport operates from design to design of water treatment systems for the pharmaceutical, food, cosmetic, chemical and oil companies.

Project sizing.

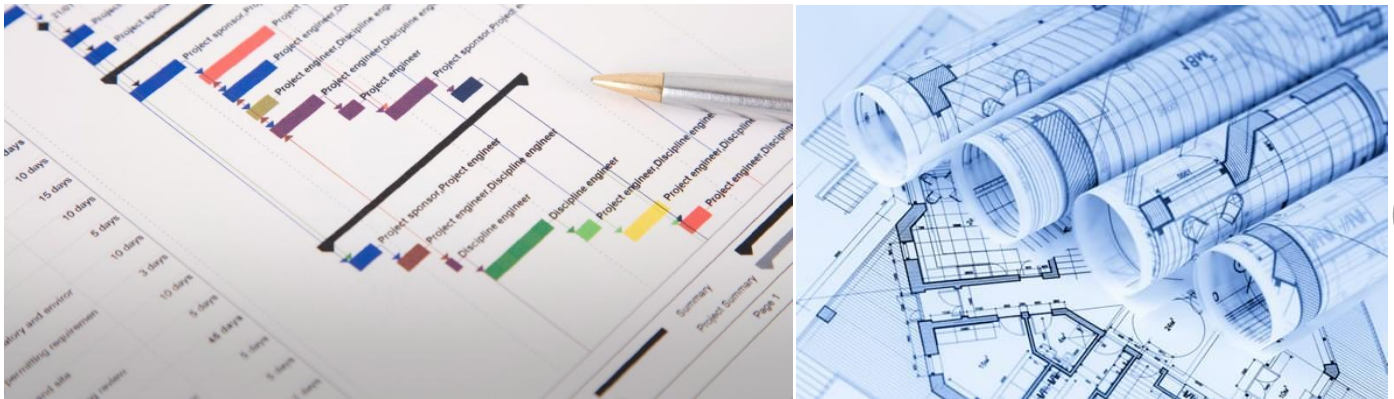
Through various analyses, ranging from physical and chemical analysis of the water supply and availability of the Faimport area can provide the optimized system according to the real needs of each client.

We provide all the necessary documentation for the DATA BOOK and system validation.

- Hydraulic plants
- Structural plants
- Floor plans,
- Assembly plants,
- Certificate of material,
- Calibration certificate,
- Qualification certificates, QI, QO and QP.
- **Certificates of welders,**
- Map of welding,
- Endoscopy,
- Analysis of RX,
- Operators training certificate,



Complete transparency during the production process.



In addition to complete systems can meet parts of systems, such as:

- **Pre-treatment.**
- In flows of up to 50 m³/H.



- **Polishing with ultra filtration.**
- In flows of up to 100 m³/H.



- Treatment by reverse osmosis.
 - the Simple step with 100 flows – 40,000 LPH.
 - the Double Step with flow rates of 50-20,000 LPH.
 - the PW & WFI with flows from 50-20,000 LPH.
 - the Osmosis with electro deionization.
 - the Osmosis with thermal disinfection.



- Warehousing and distribution systems.



We also design and build special equipment:

- Oil and water separators, by reverse osmosis.
- Reverse osmosis reject retrievers.
- Rain water retrievers.
- Effluent retrievers.



Disinfection systems.

- Pure Steam,
- Latent Heat,
- Direct heat,
- Ozone,
- Ultraviolet,



Intelligent systems for disinfection time control, or TOC.

Inputs, sensors and special valves.

Filtering inputs:

- Mineral media; And activated coal, boulders, washed sand, pebbles, zeolites
- Synthetic Media; Ion exchange resin for softeners, domestic, and deionizers,
- Specialty media; KDF, Turbidex,

Inputs in refill:

- PP filters of all sizes with single or multi gradient,
- Activated carbon filters of all sizes,
- Absolute filters in body of PP, HDPE or PVDF,
- Filter housings in PP, fiber or composite,

Equalization and filtration tanks:

- Brine tanks,
- Reagent tanks,
- SIP, Tanks
- Relaxation, tanks

Membranes:

- Ultra filtration membranes, all sizes.
- Reverse osmosis membranes, all sizes.
- Hollow fiber membranes.

Controllers and sensors:

- Conductivity controllers,
- PH controllers,
- Temperature controllers,
- Humidity controllers,
- Flow controllers,
- TOC analyzers,
- Free chlorine analyzers,
- Particle analyses,
- Automatic sample collectors



- Hardness analyzers,
- Oil analyzers in water,

Autonomous Control boxes:

- Control boxes for pre-treatment,
- Control boxes for storage,
- Control boxes for reverse osmosis,

Automatic and manual dosing pumps:

- Controlled feeder for sodium hypochlorite,
- To control feeder, Metabisulphite
- With feeder control to acid,
- Controlled feeder for sodium hydroxide

Valves and actuators in 316 l steel sanitary:

- On/off pneumatic valves or proportional.
- Valves.
- Butterfly valves.
- Gasket valve.



Distribution: sanitary pumps

- Body in SS316L,
- 2 flow-40 m³/H



Stability control and clean rooms:

Climate: Cairns

- Sizes of 100-1200 m³,
- Temperature control,
- Humidity control,
- Full record,



Climatic Conditions: Rooms

- Sizes of 1000-1000 m³,
- Temperature control,
 - Humidity control,
 - Full record,



Warehouse:

- Project,
- Temperature controls,
- Humidity controls,
- Assembly,
- Calibration,
- Validation,
- Full record



Pressure control and automation of boilers:

- **Pressure sensors.**



- Automatic actuators,
- Dump valves,
- **Safety valves,**
- Security monitors,
- Remoter of boiler, alarm
- Conductivity meter of boiler,
- Softeners, domestic,
- Pressure recorders
- Boiler automation boxes,



Flow control:

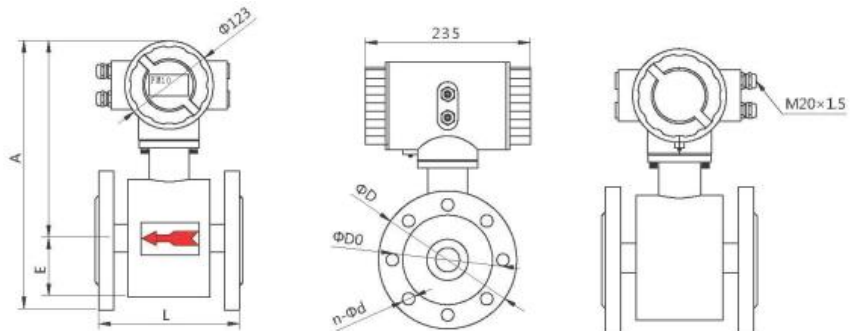


10

We have all kinds of flow sensors:

- **Flow sensors.**

- the **Electromagnetic.**



- the **Turbine.**



- the Vortex.



- the Mass



- The Micros,
 - Sanitary



Supply control and power generation:

- Power factor controls,
- **Bank of capacitors,**
- Structured control network
- Supply control sector,
- Energy control record,



- **High-performance capacitors Bank**

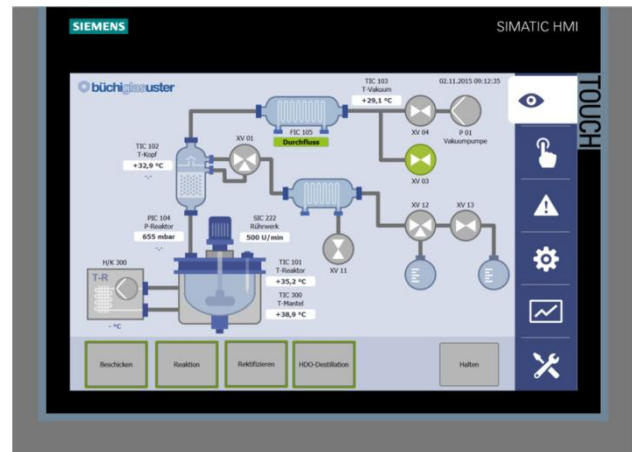


- **Solar panels of high capacity and efficiency.**
 - the **Demand project,**
 - the **Control project,**
 - the **High performance controllers,**



Process automation: control

- Upgrading old equipment,
- Process update
- Supervisorio control,
- Control by PLC with touch screen,
- Complete sensing
- Pneumatic or hydraulic actuators
- Calibration systems and remote assistance,



Quality record control:

- Control of records of temperature, moisture, and direct light,
 - the Up to 64 sensors systems,
 - WI-FI communication M2M network,
 - Communication modbus RTU network wired,
 - Communication modbus RTU, ethernet network,
 - Profibus network communication,
 - the User passwords system,
 - the Access control systems,
- Energy register control
 - the By sector, energy control systems,
 - the Correction of the power factor in individual sectors,
 - the Automatic pre-programmed switching,
 - the Inter security lock,
- Compressor automation,
- Rinsers, automation

Preventive maintenance control:

- Pre-programmed maintenance monthly,
- Preventive maintenance with standard deviation,
- Cloud, reports,
- Inventory control inputs,
- Trade control and tests,
- Control of disinfection,
- Calibration control,
- Analysis of standard deviation,
- Operation qualification,
- Qualification of operators,



Contracts with Emergency visits.

- Remote assistance,
- Face-to-face Assistance,

Training:

- Conceptual system,
- System control,
- Emergency system maintenance,
- Analysis of operators,
- Operational training,



Calibration of tools and equipment:

- Sensor calibration;
 - the Temperature-RBC
 - the Pressure-CBR
 - the Moisture-RBC
 - the pH-RBC
 - the Conductivity-RBC
 - the Flow-RBC

- Integrity tests;
 - the Absolute filters,
 - the Ultraviolet disinfection systems,
 - the Heat disinfection systems,
 - the Clean rooms,
 - the Stability rooms,
 - the 316 l stainless steel pipe
 - Roughness,
 - Endoscopy,
 - RX,
 - Porosity,
 - the Up to 10 BAR, hydrostatic



Learn more by visiting our website: www.faimport.com.br

Or through our emails:

- Commercial – comercial@faimport.com.br
- Engineering – eng@faimport.com.br
- SAC – sac@faimport.com.br

Or if you prefer by phone:

- +55 (21) 3248-4007
- +55 (21) 3257-2638